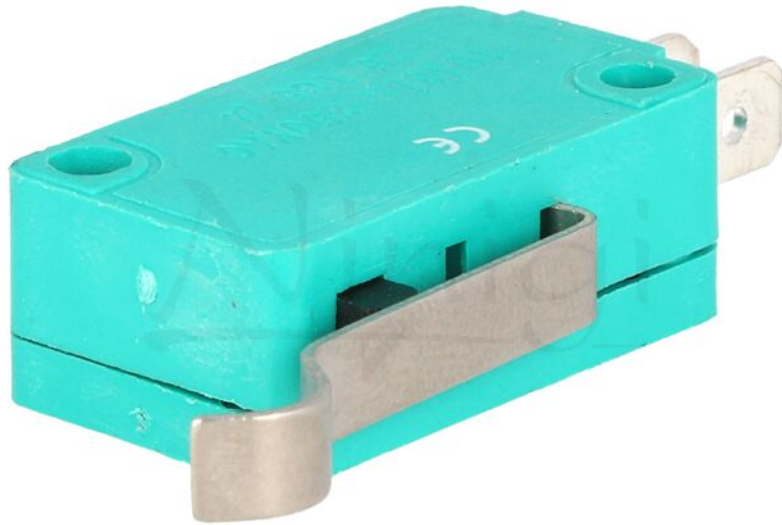


## Product card WLK-6

---



<b>Symbol:</b>	WLK-6
<b>Product groups:</b>	Microswitches SNAP ACTION

### Product specifications

<b>Type of switch:</b>	microswitch SNAP ACTION
<b>AC contacts rating @R:</b>	10A / 250V AC
<b>Switches features:</b>	with lever with roller simulation
<b>Contacts configuration:</b>	SPDT
<b>Max. contact resistance::</b>	30mΩ
<b>Switching method:</b>	ON-(ON)
<b>Number of positions:</b>	2
<b>Stable positions number:</b>	1

## Product card WLK-6

---

<b>IP rating:</b>	IP40
<b>Leads:</b>	connectors
<b>Leads dimensions:</b>	4.8x0.5mm
<b>Body dimensions:</b>	28x10.3x16mm
<b>Operating temperature:</b>	-25...80°C
<b>Operating Force:</b>	1.6N
<b>Lever length:</b>	23mm
<b>Electrical life:</b>	100000 cycles
<b>Min. insulation resistance:</b>	0.1GΩ

## Additional information

<b>Gross weight:</b>	0.007 kg
----------------------	----------