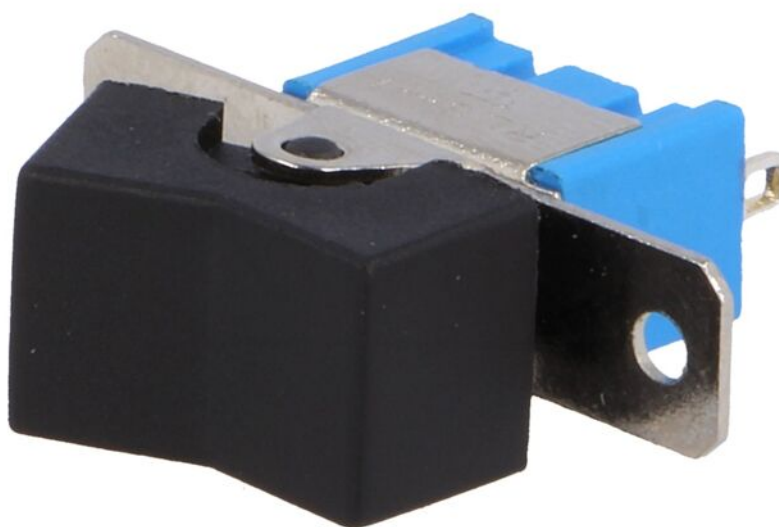


Product card RSL103A1



| | |
|----------------------------------|-----------------|
| Symbol: | RSL103A1 |
| Manufacturer part number: | RSL-103A1 |
| Product groups: | Rocker Switches |

Product specifications

| | |
|---------------------------------|--------------|
| Type of switch: | ROCKER |
| Contacts configuration: | SP3T |
| Number of positions: | 3 |
| Stable positions number: | 3 |
| Switching method: | ON-OFF-ON |
| AC contacts rating @R: | 3A / 250V AC |
| Key button colour: | black |

Product card RSL103A1

| | |
|----------------------------------|---------------|
| Illumination: | none |
| Max. contact resistance:: | 20mΩ |
| Leads: | for soldering |
| Electrical life: | 20000 cycles |
| Button marking: | blank |
| Shape: | rectangular |
| Operating temperature: | -25...85°C |

Additional information

| | |
|----------------------|----------|
| Gross weight: | 0.005 kg |
|----------------------|----------|