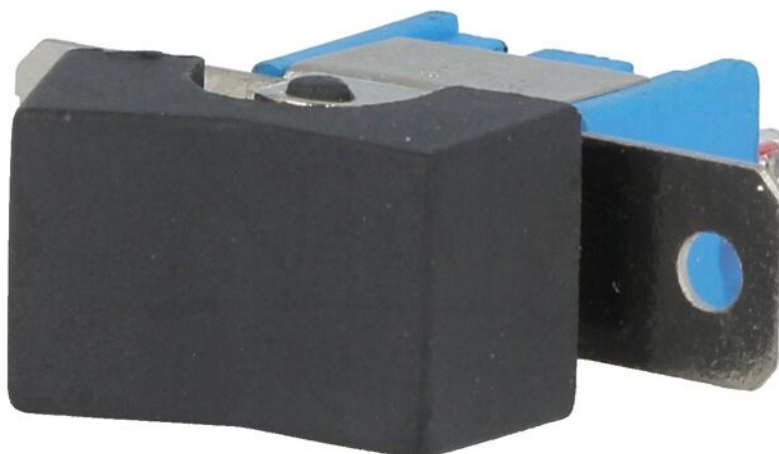


## Product card RSL102A1

---



<b>Symbol:</b>	RSL102A1
<b>Manufacturer part number:</b>	RSL-102A1
<b>Product groups:</b>	Rocker Switches

## Product specifications

<b>Type of switch:</b>	ROCKER
<b>Contacts configuration:</b>	SPDT
<b>Number of positions:</b>	2
<b>Stable positions number:</b>	2
<b>Switching method:</b>	ON-ON
<b>AC contacts rating @R:</b>	3A / 250V AC
<b>Key button colour:</b>	black

<b>Illumination:</b>	none
<b>Max. contact resistance::</b>	20mΩ
<b>Leads:</b>	for soldering
<b>Electrical life:</b>	20000 cycles
<b>Button marking:</b>	blank
<b>Shape:</b>	rectangular
<b>Operating temperature:</b>	-25...85°C

## Additional information

<b>Gross weight:</b>	0.005 kg
----------------------	----------