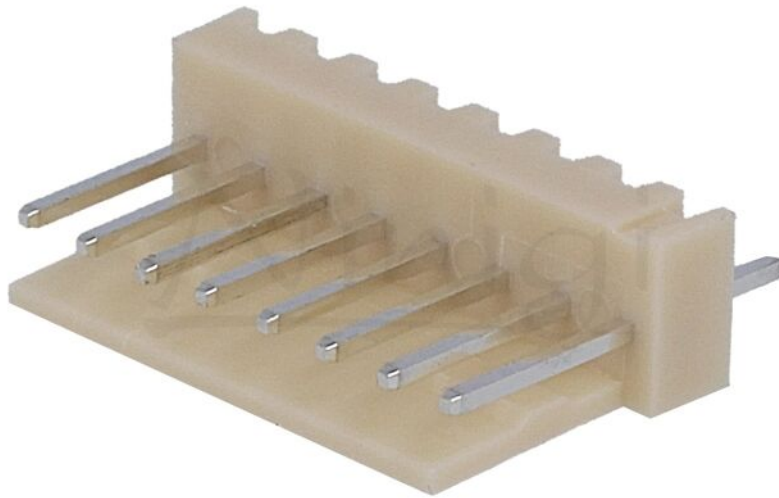


## Product card NS25-W8P

---



<b>Symbol:</b>	NS25-W8P
<b>Product groups:</b>	Raster signal connectors

### Product specifications

<b>Type of connector:</b>	wire-board
<b>Connector:</b>	socket
<b>Kind of connector:</b>	male
<b>Number of pins:</b>	8
<b>Manufacturer series:</b>	NS25
<b>Current rating:</b>	3A
<b>Rated voltage:</b>	0.25kV
<b>Spatial orientation:</b>	straight
<b>Electrical mounting:</b>	THT
<b>Contacts pitch:</b>	2.54mm

<b>Connector pinout layout:</b>	1x8
<b>Contact plating:</b>	tinned
<b>Flammability rating:</b>	UL94V-0
<b>Max. contact resistance::</b>	10mΩ
<b>Enclosure material:</b>	polyamide
<b>A dimension:</b>	20.32mm
<b>B dimension:</b>	17.78mm
<b>Leads dimensions:</b>	0.64x0.64x3.3mm
<b>Operating temperature:</b>	-25...85°C

## Additional information

<b>Gross weight:</b>	0.001 kg
----------------------	----------