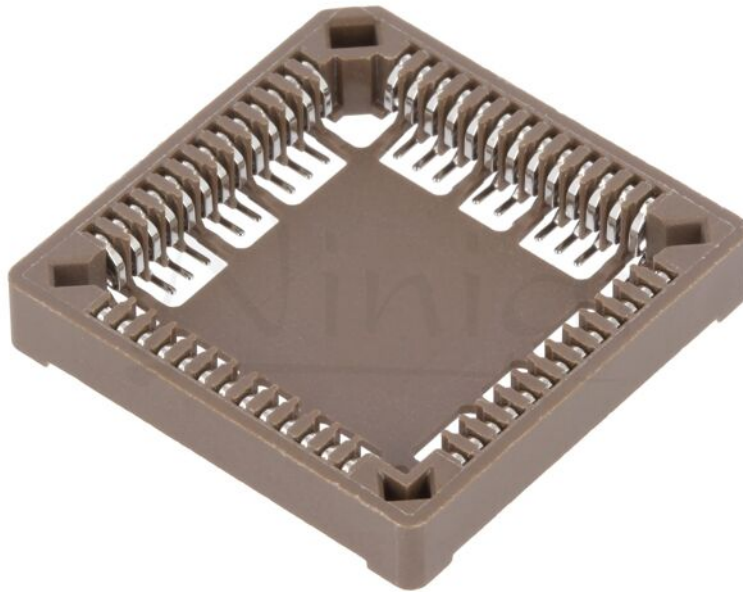


## Product card PLCC-52SMD

---



<b>Symbol:</b>	PLCC-52SMD
<b>Product groups:</b>	PLCC sockets

### Product specifications

<b>Type of Socket:</b>	integrated circuits
<b>Application:</b>	PLCC52
<b>Electrical mounting:</b>	SMT
<b>Contact material:</b>	phosphor bronze
<b>Contact plating:</b>	tinned
<b>Max. operating current:</b>	1A
<b>Max. contact resistance::</b>	30mΩ
<b>Mechanical mounting:</b>	on PCBs

## **Additional information**

**Gross weight:** 0.002 kg