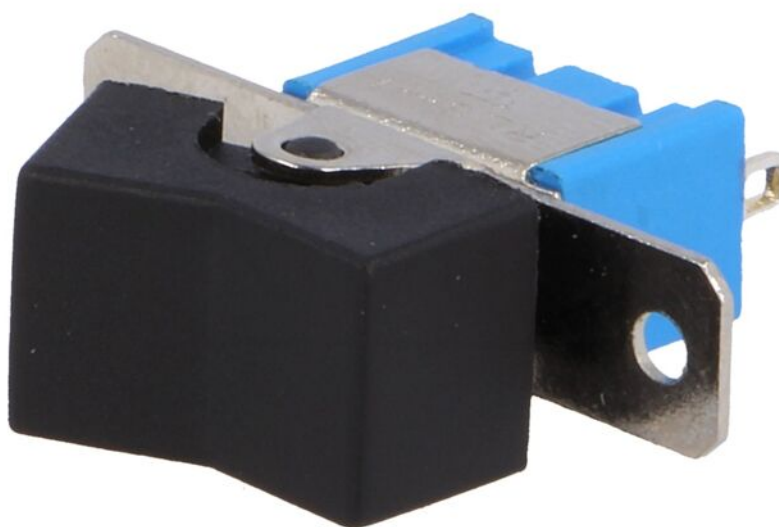


Product card RSL103A1



Symbol:	RSL103A1
Manufacturer part number:	RSL-103A1
Product groups:	Rocker Switches

Product specifications

Type of switch:	ROCKER
Contacts configuration:	SP3T
Number of positions:	3
Stable positions number:	3
Switching method:	ON-OFF-ON
AC contacts rating @R:	3A / 250V AC
Key button colour:	black

Illumination:	none
Max. contact resistance::	20mΩ
Leads:	for soldering
Electrical life:	20000 cycles
Button marking:	blank
Shape:	rectangular
Operating temperature:	-25...85°C

Additional information

Gross weight:	0.005 kg
----------------------	----------