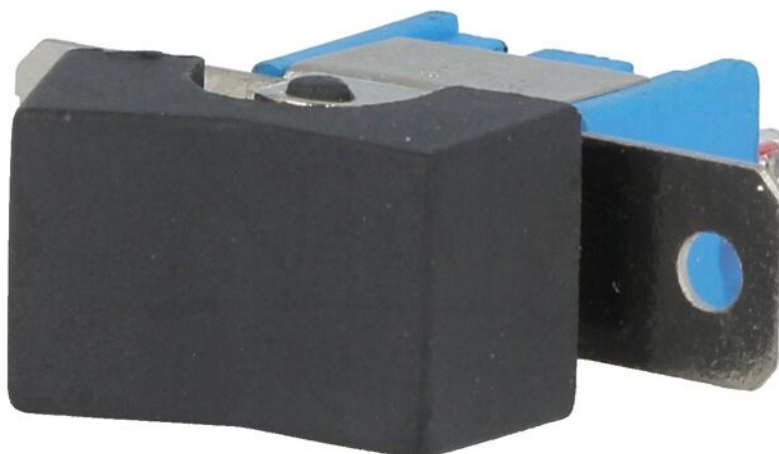


Product card RSL102A1



Symbol:	RSL102A1
Manufacturer part number:	RSL-102A1
Product groups:	Rocker Switches

Product specifications

Type of switch:	ROCKER
Contacts configuration:	SPDT
Number of positions:	2
Stable positions number:	2
Switching method:	ON-ON
AC contacts rating @R:	3A / 250V AC
Key button colour:	black

Illumination:	none
Max. contact resistance::	20mΩ
Leads:	for soldering
Electrical life:	20000 cycles
Button marking:	blank
Shape:	rectangular
Operating temperature:	-25...85°C

Additional information

Gross weight:	0.005 kg
----------------------	----------