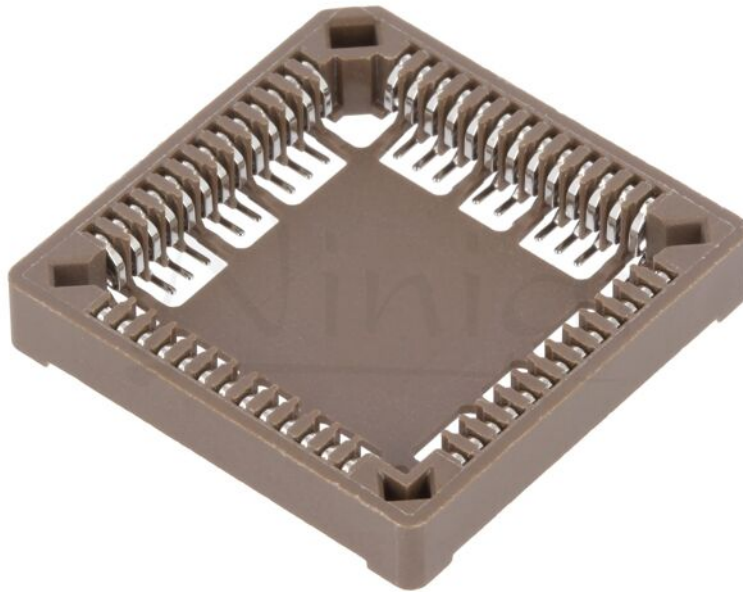


Product card PLCC-52SMD



Symbol:	PLCC-52SMD
Product groups:	PLCC sockets

Product specifications

Type of Socket:	integrated circuits
Application:	PLCC52
Electrical mounting:	SMT
Contact material:	phosphor bronze
Contact plating:	tinned
Max. operating current:	1A
Max. contact resistance::	30mΩ
Mechanical mounting:	on PCBs

Additional information

Gross weight:

0.002 kg