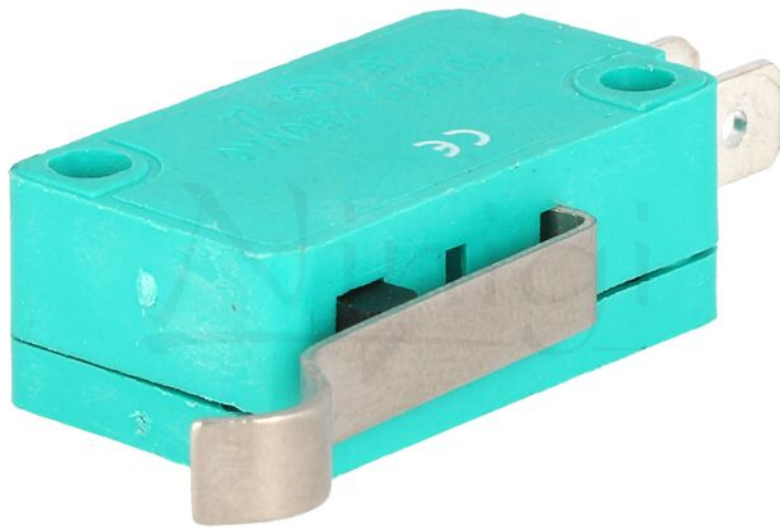


Product card WLK-6



Symbol:	WLK-6
Product groups:	Microswitches SNAP ACTION

Product specifications

Type of switch:	microswitch SNAP ACTION
AC contacts rating @R:	10A / 250V AC
Switches features:	with lever with roller simulation
Contacts configuration:	SPDT
Max. contact resistance::	30mΩ
Switching method:	ON-(ON)
Number of positions:	2
Stable positions number:	1

Product card WLK-6

IP rating:	IP40
Leads:	connectors
Body dimensions:	28x10.3x16mm
Operating temperature:	-25...80°C
Operating Force:	1.6N
Lever length:	23mm
Electrical life:	100000 cycles
Min. insulation resistance:	0.1GΩ

Additional information

Gross weight:	0.007 kg
----------------------	----------