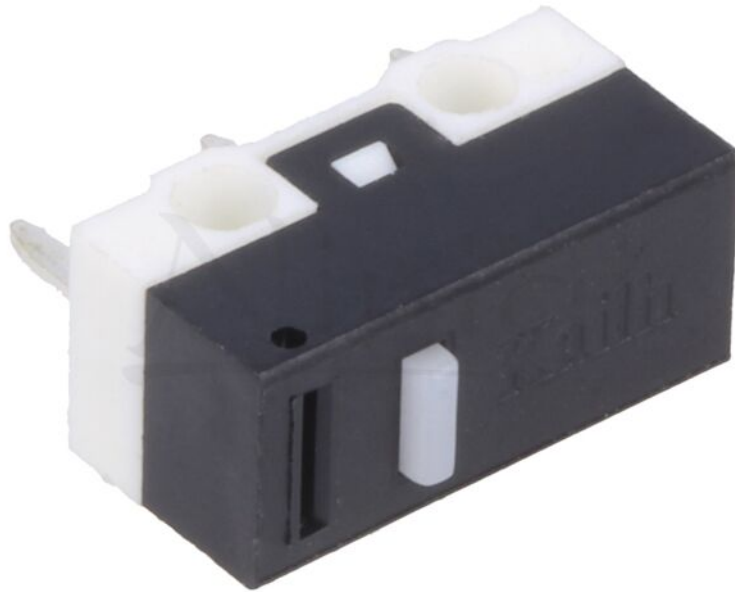


Product card MSM-21



Symbol:	MSM-21
Manufacturer part number:	MSW-21
Product groups:	Microswitches SNAP ACTION

Product specifications

Type of switch:	microswitch SNAP ACTION
Switches features:	without lever
Contacts configuration:	SPDT
Max. contact resistance::	30mΩ
Switching method:	ON-(ON)
Number of positions:	2
Stable positions number:	1

Product card MSM-21

IP rating:	IP40
Leads:	for PCB, straight
Body dimensions:	12.8x5.8x6.5mm
Operating temperature:	-25...65°C
Operating Force:	1N
Electrical life:	30000 cycles
Terminal pitch:	5.08mm
Maximum current:	1A
Voltage min.:	125V
Max. voltage:	250V AC

Additional information

Gross weight:	0.001 kg
----------------------	----------