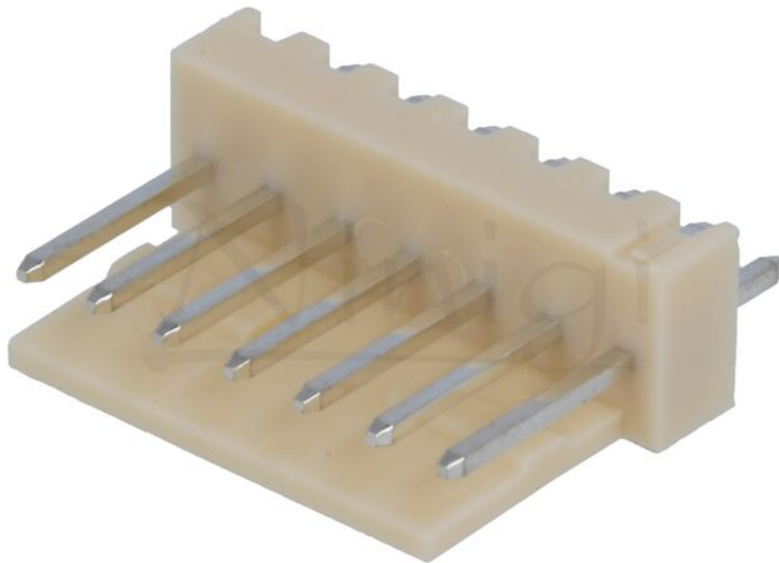


Product card NS25-W7P



Symbol:	NS25-W7P
Product groups:	Raster signal connectors

Product specifications

Type of connector:	wire-board
Connector:	socket
Kind of connector:	male
Number of pins:	7
Manufacturer series:	NS25
Current rating:	3A
Rated voltage:	0.25kV
Spatial orientation:	straight
Electrical mounting:	THT
Contacts pitch:	2.54mm

Product card NS25-W7P

Connector pinout layout:	1x7
Contact plating:	tinned
Flammability rating:	UL94V-0
Max. contact resistance::	10mΩ
Enclosure material:	polyamide
A dimension:	17.78mm
B dimension:	15.24mm
Leads dimensions:	0.64x0.64x3.3mm
Operating temperature:	-25...85°C

Additional information

Gross weight:	0.001 kg
----------------------	----------